



OFFICE OF THE INSPECTOR GENERAL
NATIONAL POLICE SERVICE

CRIME SITUATION REPORT

2017

TABLE OF CONTENTS

| | |
|---|----|
| INTRODUCTION | 4 |
| A. CRIME ANALYSIS..... | 4 |
| i. Annual Crime Comparison..... | 4 |
| i. Monthly Crime Index..... | 4 |
| ii. Regional Crime Analysis..... | 5 |
| i. County Crime Analysis | 5 |
| B. CAUSES OF CRIME | 5 |
| i. Terrorism..... | 5 |
| ii. Cattle Rustling | 6 |
| iii. Influx of Illegal Aliens and Undocumented Immigrants | 7 |
| C. POLICE OFFICERS KILLED IN LINE OF DUTY | 7 |
| D. COFFEE THEFT..... | 7 |
| E. GENERAL ELECTION SITUATION..... | 8 |
| F. SCHOOL UNREST | 8 |
| G. DRUGS AND NARCOTIC SUBSTANCES | 8 |
| H. CYBERCRIME..... | 8 |
| K. ROAD TRAFFIC ACCIDENTS..... | 9 |
| L. APPENDIX..... | 10 |
| Appendix 1: Comparative Crime figures for the Period 2015/2016/2017 | 10 |
| Appendix 2: Monthly crime figures for the Years 2015/2016/2017..... | 11 |
| Appendix 3: Comparative County Crime Figure for the years 2016-2017 | 12 |
| Appendix 4: Regional crime figures for the Years 2015/2016/2017 | 14 |
| Appendix 5: Pie Chart of Comparative Crime Figures for January to December 2017 | 15 |
| Appendix 6: Bar Graph of Comparative Crime Figures for the years 2015/2016/2017 | 16 |
| Appendix 7: Coffee theft Cases for the Year 2016/ 2017 | 17 |
| Appendix 8: Drug and Psychotropic Substance Arrests for the Year 2017 | 18 |

| | |
|---|----|
| Appendix 9: Table of Comparative No. of Accidents reported | 19 |
| Appendix 10: Offences per County for Jan-Dec 2017 | 20 |
| Appendix 11: Comparative Crime Figures for the years 2015/2016/2017 | 23 |

INTRODUCTION

Security continues to be one of the main pillars that support economic activities and provide investor confidence. Without security there can never be economic growth and development. Different factors influence crime levels and therefore the approach to fighting crime needs to be multifaceted. It is of utmost importance that every citizen plays their role to support the government in ensuring security of life and property within our borders.

The government has continued to invest heavily in the security sector by recruiting more police officers, equipping the police and improving their welfare. However, 2017 being an election year saw some crimes going up while others reducing depending on the political climate in different areas of the country.

A. CRIME ANALYSIS

i. Annual Crime Comparison

In the year **2017** a total of **77,992** cases of crime reported to the police as compared to **76,986** in **2016**. This was an increase of **1006** cases (or **1.3%**) from **2016**. This increase was as a result of increases in cases under the categories of Stealing by **1295** cases or **12%**, Breakings by **510** Cases or **9%**, Theft of Stock by **218** cases or **11%**, Other Offences against Persons by **220** cases or **1%**, Theft by Servant by **192** cases or **8%**, Economic crimes by **192** cases or **5%**, Vehicle and Other thefts by **49** cases or **4%**, Offences involving Police Officers by **29** Cases or **51%**, Homicide **23** cases or **1%** and Robbery **16** Cases or **1%**.

Decreases were however noted in the following categories; Offences against Morality **736** cases or **12%**, Dangerous Drugs **595** cases or **10%**, Other Penal Code Offences **275** cases or **4%**, Traffic Offences **70** cases or **50%** and Corruption **17** cases or **18%**.

i. Monthly Crime Index

The month of May had the highest number of cases reported recording **7394** cases. It was followed by February with **6834** cases and April with **6826** cases. The least number of cases were reported in the months of November **6046** cases and August **5559** cases.

It is also important to note that increases in monthly crimes were recorded in March (**6.3%**), May (**16.53%**), June (**1.4%**), August (**6.86%**), September (**8.32%**) and December (**9.4%**). Decreases were in this same area were recorded February (**1.88%**), April (**18.66%**), July (**2.76%**), October (**14.77%**) and November (**4.06%**).

Comparatively the months with highest increases relative to 2016 were May at by **15.8%**, December **11.8%**, September **6.2%**, March **3.8%** and April **2.8%**. January, April and July recorded changes that were less than **1%**. The remaining months recorded decreases with August at **9.1%**.

ii. Regional Crime Analysis

Rift Valley region was the region with the highest crime recorded with **19,209** cases. Within Rift Valley region Nakuru County had **4,313** cases which was the highest in the region. Uasin Gishu was second with **2,072** cases reported.

Eastern region was second highest region with **14,906** cases reported. Meru County in the region recorded **5,151** cases. **Central** region was third with **12,677** cases. Kiambu, county recorded **2,402** cases.

North Eastern region recorded the least total number of cases with **1,323** cases recorded for the year 2017.

i. County Crime Analysis

Nairobi County recorded **7,434** cases which was the highest in the country in terms of county crime analysis. Kiambu County was second with **5,603** cases while Meru was third with **5,151** cases. Isiolo County was the least recording a total of **368** cases.

B. CAUSES OF CRIME

i. Terrorism

During this period **80** cases of terrorist attacks were recorded as compared to **37** cases in 2016. As a result of these incidents, 82 people were killed and a total of 118 persons Injured. 31 of those killed were Police officers, while 47 were Civilians and 4 were militants. A total of 118 people were injured; 65 were security officers, 41 were civilians and 12 were militants.

The terrorists mostly targeted security camps and vehicles carrying officers on patrol. They also increased their attacks on communication mast. Their time of attack is mostly between midnight to early morning.

Anti-Terrorism Efforts

- i. *Operation Linda Boni* has been scaled up into a long term *Boni Enclave Campaign* in an endeavor to disruption the terror networks operating within Boni forest. These efforts have seen suspects from different nationalities arrested and some of their equipment intercepted.
- i. Deployment of extra security personnel along the border counties as well as recruitment of additional National Police Reserves(NPRs) who are well versed with the local terrain.
- ii. Continuous surveillance to deter entry of terrorists and contraband goods.

ii. Cattle Rustling

During the period under review, **130** cases of cattle rustling and stock theft were reported as compared to **240** cases in 2016. A total of **4077** livestock were raided with **796** recovered as compared to **4547** livestock raided and **1287** recovered in the previous year. Twenty (20) people were killed while 17 others injured as compared to **30** people killed and **28** people injured in 2016.

Rift Valley region had the highest number of cases posting **83** cases of the total cases reported. Nyanza was second recording **28** cases while Central region was third with **12** cases.

Contributory factors for this activity is scarcity of water and pasture for animals, boundary disputes, political incitement and cultural practices.

Efforts to Deal with Cattle Rustling

- i. Engaging the services of National Police Reserves in provision of security to the communities to protect them external threats
- ii. Security operations to recover stolen livestock and illegal firearms;
- iii. Carrying out a comprehensive disarmament exercise to recover illicit weapons;

iii. *Influx of Illegal Aliens and Undocumented Immigrants*

In the year 2017 a total of **915** aliens and undocumented immigrants were arrested all over the country. The countries of origin included Ethiopia (**316**), Somali (**232**), Sudan (**90**) Uganda (**69**), Burundi (**66**) people and Nigeria (**65**) people. Other nationalities constituted less than **50** people.

Nairobi and Busia counties recorded the highest number of aliens arrested by police during this period. Others were arrested mostly in Kiambu, and Isiolo counties. Women and children are trafficked for prostitution and forced labor. The trafficked persons are normally shipped to other parts of the world.

C. POLICE OFFICERS KILLED IN LINE OF DUTY

In the period under review, a total of **78** officers were killed across the country as compared to **70** in the previous year. North Eastern region recorded the highest number of officers killed totaling to 19 cases, followed by Rift Valley with 18 Coast with 16, Nairobi 10, Eastern 8, Central 3 while Western and Nyanza regions recorded 2 case each. The highest number recorded in North Eastern region was as a result of ambushes laid by the Al Shabaab militia mainly in Mandera and Garissa counties. The attacks targeted police stations/posts and routes used by police officers on patrol. A similar method of attack was employed in coast region. Militia men mainly attacked Lamu County, within Kiunga and Boni forest.

The number of deaths recorded in Rift Valley was as a result of cattle rustling where bandits ambushed police officers mainly in Baringo and Laikipia counties. A major ambush was reported in Ng'arua, Laikipia County.

D. COFFEE THEFT

During the period, a total of **12** cases were reported throughout the country as compared to **33** cases in the previous year. Most of coffee theft incidents were reported in Kiambu, Kirinyaga, Muranga and Nyamira counties. Bungoma and Nakuru counties reported coffee theft that was on transit. A total of **20,270kgs** of coffee berries and **210 bags** of coffee berries, were stolen in 2017 and only **15kgs** were recovered.

E. GENERAL ELECTION SITUATION

During the 8th August 2017 General elections and 26th October, 2017 repeat presidential elections a total of 12 counties reported 23 civilian deaths and 28 injuries in relation to the election. One police death and 10 injuries were reported in relation to election violence.

The factors that contributed to election violence include but are not limited to the tribal nature of the presidential race politics, amount of interest generated by the gubernatorial seat, Inter-Tribal Conflict and Boundary Disputes, Organized Criminal Groupings, Tribalism, Ethnicity and Corruption and Political Incitement.

F. SCHOOL UNREST

The year 2017 **235 cases** of school unrests were reported as compared to **300** in 2016. A total of **10** student deaths were reported, **82** students injured, **92** dormitories burned down and **47** School buildings destroyed. A total of **108** students and **24** other persons were arrested. **32** of them prosecuted have since been prosecuted.

G. DRUGS AND NARCOTIC SUBSTANCES

During the period under review a total of **4,510** cases were detected compared to **5,198** cases in the previous year of 2016. A total of **4,389** people were arrested **4,389** for being in Possession and Trafficking of Narcotic Drugs. These suspects were all arraigned in various Courts across the Country.

A total of **1402.5kgs** of Cannabis Herbal was arrested as compared to **381.572Kgs** in 2016. **17.3591kg** of Heroin was arrested as compared to **106.323Kgs** in 2016 while **1.01kg** of Cocaine was arrested as compared to **24.579Kgs** in the previous year.

H. CYBERCRIME

A total of 123 cases were reported in 2017 as compared to 72 cases in 2016. This increase was attributed to reckless abuse of the social media during the electioneering period. Arrests were made as a result of use of intelligence and monitoring.

There has been a rise of computer related frauds targeting banks, mobile money transfers services and SACCOs. The methods employed include identity theft, hacking, denial of services, intrusion and manipulation of computer systems.

K. ROAD TRAFFIC ACCIDENTS

In the year under review a total of 4456 cases were recorded as compared to **5291** cases reported in 2016. The total number of fatal victims was **2740** as compared to **3127** victims recorded in 2016. However, there was a large number of accident fatalities during the festive month of December which claimed lives in a shorter period of time. Slight accidents contributed to the highest number of victims affected with **4579** victims, serious injury accidents recorded **3814**.

To deal with road carnage the government employed measures which included introduction of tamper proof speed governors for all PSV vehicles, enforcement of the alcohol breathalyzers (Alco-Blow), acquisition and utilization of speed guns and severe punishment being meted on offenders.

L. APPENDIX

Appendix 1: Comparative Crime figures for the Period 2015/2016/2017

| OFFENCES | 2015 | 2016 | DIF. | % DIFF | 2016 | 2017 | DIF. | % DIFF |
|------------------------------------|--------------|--------------|-------------|-------------|--------------|--------------|-------------|----------|
| HOMICIDE | 2648 | 2751 | 103 | 4 | 2751 | 2774 | 23 | 1 |
| OFFENCES AGAINST MORALITY | 6164 | 6228 | 64 | 1 | 6228 | 5492 | -736 | -12 |
| OTHER OFFENCES AGAINST PERSONS | 21174 | 22295 | 1121 | 5 | 22295 | 22515 | 220 | 1 |
| ROBBERY | 2865 | 2697 | -168 | -6 | 2697 | 2713 | 16 | 1 |
| BREAKINGS | 5591 | 5621 | 30 | 1 | 5621 | 6131 | 510 | 9 |
| THEFT OF STOCK | 1961 | 1918 | -43 | -2 | 1918 | 2136 | 218 | 11 |
| STEALING | 9528 | 10361 | 833 | 9 | 10361 | 11656 | 1295 | 12 |
| THEFT BY SERVANT | 2184 | 2440 | 256 | 12 | 2440 | 2632 | 192 | 8 |
| VEHICLE AND OTHER THEFTS | 1111 | 1355 | 244 | 22 | 1355 | 1404 | 49 | 4 |
| DANGEROUS DRUGS | 5525 | 6160 | 635 | 11 | 6160 | 5565 | -595 | -10 |
| TRAFFIC OFFENCES | 120 | 139 | 19 | 16 | 139 | 69 | -70 | -50 |
| CRIMINAL DAMAGE | 3983 | 4307 | 324 | 8 | 4307 | 4262 | -45 | -1 |
| ECONOMIC CRIMES | 3244 | 3503 | 259 | 8 | 3503 | 3695 | 192 | 5 |
| CORRUPTION | 79 | 92 | 13 | 16 | 92 | 75 | -17 | -18 |
| OFFENCES INVOLVING POLICE OFFICERS | 71 | 57 | -14 | -20 | 57 | 86 | 29 | 51 |
| OFFENCES INVOLVING TOURIST | 19 | 15 | -4 | -21 | 15 | 15 | 0 | 0 |
| OTHER PENAL CODE OFFENCES | 6223 | 7047 | 824 | 13 | 7047 | 6772 | -275 | -4 |
| TOTALS | 72490 | 76986 | 4496 | 77.5 | 76986 | 77992 | 1006 | 1 |

Appendix 2: Monthly crime figures for the Years 2015/2016/2017

| MONTH | 2015 | 2016 | DIFF | %DIFF | 2016 | 2017 | DIFF | %DIFF |
|--------------|--------------|--------------|-------------|-------------|--------------|--------------|-------------|------------|
| JANUARY | 6238 | 6312 | 74 | 1.2 | 6515 | 6569 | 54 | 0.8 |
| FEBRUARY | 5619 | 6478 | 859 | 15.3 | 6791 | 6834 | 43 | 0.6 |
| MARCH | 6156 | 6791 | 635 | 10.3 | 6312 | 6552 | 240 | 3.8 |
| APRIL | 5537 | 6114 | 577 | 10.4 | 6642 | 6826 | 184 | 2.8 |
| MAY | 5224 | 6098 | 874 | 16.7 | 6383 | 7394 | 1011 | 15.8 |
| JUNE | 5995 | 6291 | 296 | 4.9 | 6810 | 6388 | -422 | -6.2 |
| JULY | 5802 | 6555 | 753 | 13.0 | 6478 | 6429 | -49 | -0.8 |
| AUGUST | 5560 | 6403 | 843 | 15.2 | 6114 | 5559 | -555 | -9.1 |
| SEPTEMBER | 6057 | 6344 | 287 | 4.7 | 6098 | 6478 | 380 | 6.2 |
| OCTOBER | 6192 | 6718 | 526 | 8.49 | 6718 | 6302 | -416 | -6.2 |
| NOVEMBER | 5571 | 6210 | 639 | 11.47 | 6210 | 6046 | -164 | -2.6 |
| DECEMBER | 6499 | 5915 | -584 | -8.99 | 5915 | 6615 | 700 | 11.8 |
| TOTAL | 72490 | 76986 | 4496 | 6.20 | 76986 | 77992 | 1006 | 1.3 |

Appendix 3: Comparative County Crime Figure for the years 2016-2017

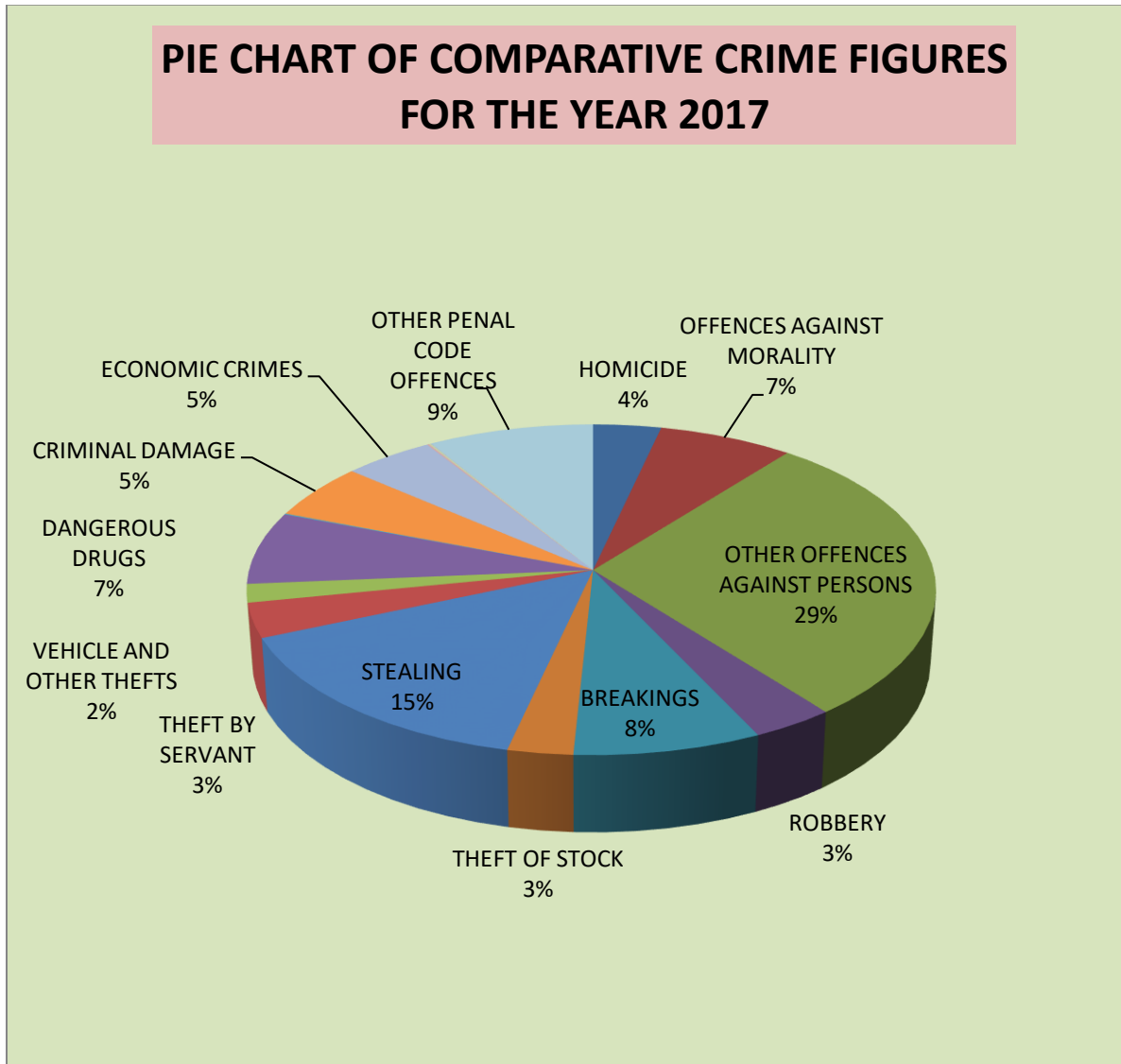
| REGION (COUNTIES) | 2016 | 2017 | DIFF | % DIFF |
|--------------------------|-------------|-------------|-------------|---------------|
| NAIROBI | 4954 | 7434 | 2480 | 50 |
| KIAMBU | 6006 | 5603 | -403 | -7 |
| MERU | 5117 | 5151 | 34 | 1 |
| NAKURU | 4133 | 4313 | 180 | 4 |
| MOMBASA | 3034 | 2847 | -187 | -6 |
| MACHAKOS | 2452 | 2633 | 181 | 7 |
| MURANGA | 2260 | 2402 | 142 | 6 |
| BUNGOMA | 2422 | 2269 | -153 | -6 |
| KISII | 2180 | 2218 | 38 | 2 |
| UASIN GISHU | 2068 | 2072 | 4 | 0 |
| KITUI | 1679 | 1946 | 267 | 16 |
| KISUMU | 2026 | 1858 | -168 | -8 |
| KILIFI | 2254 | 1692 | -562 | -25 |
| TRANS NZOIA | 1457 | 1674 | 217 | 15 |
| NYERI | 1792 | 1657 | -135 | -8 |
| KAJIADO | 1435 | 1650 | 215 | 15 |
| BUSIA | 1633 | 1639 | 6 | 0 |
| EMBU | 1433 | 1633 | 200 | 14 |
| KIRINYAGA | 1656 | 1613 | -43 | -3 |
| MAKUENI | 1630 | 1593 | -37 | -2 |
| KAKAMEGA | 2382 | 1584 | -798 | -34 |
| KERICHO | 1568 | 1524 | -44 | -3 |
| NYANDARUA | 1473 | 1402 | -71 | -5 |
| HOMA BAY | 1400 | 1332 | -68 | -5 |
| SIAYA | 1470 | 1321 | -149 | -10 |
| MIGORI | 1303 | 1281 | -22 | -2 |
| LAIKIPIA | 1061 | 1220 | 159 | 15 |
| NANDI | 1105 | 1148 | 43 | 4 |
| NAROK | 1308 | 1110 | -198 | -15 |
| TURKANA | 927 | 1092 | 165 | 18 |
| NYAMIRA | 1055 | 1091 | 36 | 3 |
| KWALE | 1037 | 851 | -186 | -18 |
| BOMET | 897 | 850 | -47 | -5 |
| THARAKA NITHI | 722 | 846 | 124 | 17 |

| | | | | |
|-----------------|-------|-------|------|-----|
| BARINGO | 827 | 821 | -6 | -1 |
| VIHIGA | 886 | 764 | -122 | -14 |
| MARSABIT | 675 | 736 | 61 | 9 |
| TAITA TAVETA | 755 | 679 | -76 | -10 |
| WEST POKOT | 795 | 670 | -125 | -16 |
| ELGEYO MARAKWET | 579 | 633 | 54 | 9 |
| GARISSA | 525 | 452 | -73 | -14 |
| MANDERA | 254 | 446 | 192 | 76 |
| SAMBURU | 361 | 432 | 71 | 20 |
| WAJIR | 343 | 425 | 82 | 24 |
| TANA RIVER | 453 | 402 | -51 | -11 |
| LAMU | 434 | 385 | -49 | -11 |
| ISIOLO | 507 | 368 | -139 | -27 |
| KAPU | 141 | 129 | -12 | -9 |
| RAILWAYS | 122 | 101 | -21 | -17 |
| | 76986 | 77992 | | |

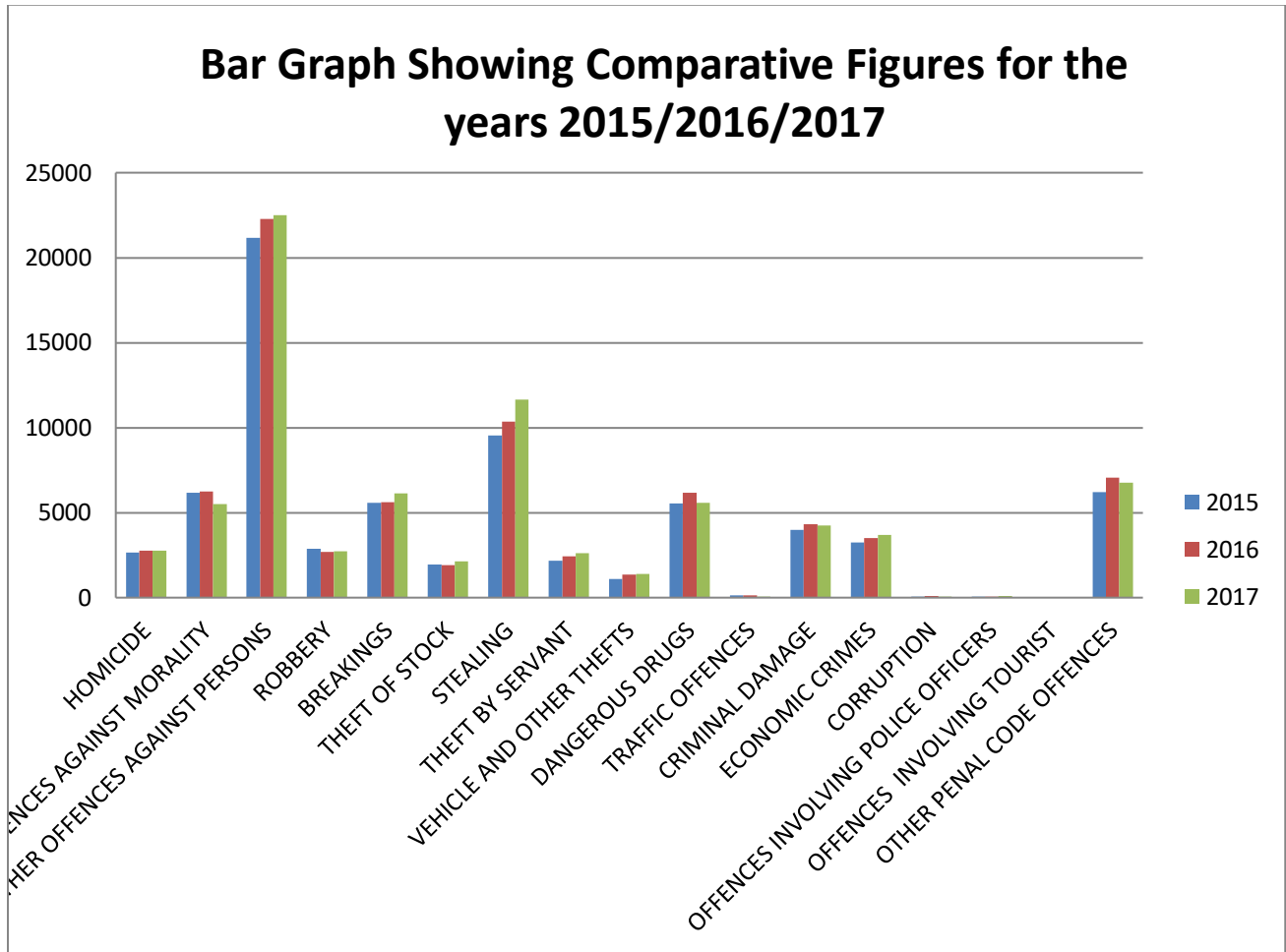
Appendix 4: Regional crime figures for the Years 2015/2016/2017

| REGION | 2015 | 2016 | DIFF | %DIFF | 2016 | 2017 | DIFF | %DIFF |
|---------------|-------------|-------------|-------------|--------------|-------------|-------------|-------------|--------------|
| RVP | 18326 | 18521 | 195 | 1.1 | 18521 | 19209 | 688 | 3.7 |
| EASTERN | 10431 | 14215 | 3784 | 36.3 | 14215 | 14906 | 691 | 4.9 |
| CENTRAL | 11422 | 13187 | 1765 | 15.5 | 13187 | 12677 | -510 | -3.9 |
| NYANZA | 9778 | 9434 | -344 | -3.5 | 9434 | 9101 | -333 | -3.5 |
| NAIROBI | 4677 | 4954 | 277 | 5.9 | 4954 | 7434 | 2480 | 50.1 |
| COAST | 8565 | 7967 | -598 | -7.0 | 7967 | 6856 | -1111 | -13.9 |
| WESTERN | 8065 | 7323 | -742 | -9.2 | 7323 | 6256 | -1067 | -14.6 |
| NEP | 1226 | 1122 | -104 | -8.5 | 1122 | 1323 | 201 | 17.9 |
| KAPU | 132 | 141 | 9 | 6.8 | 141 | 129 | -12 | -8.5 |
| RAILWAYS | 162 | 122 | -40 | -24.7 | 122 | 101 | -21 | -17.2 |
| TOTAL | 72784 | 76986 | 4202 | 5.8 | 76986 | 77992 | 1006 | 1.3 |

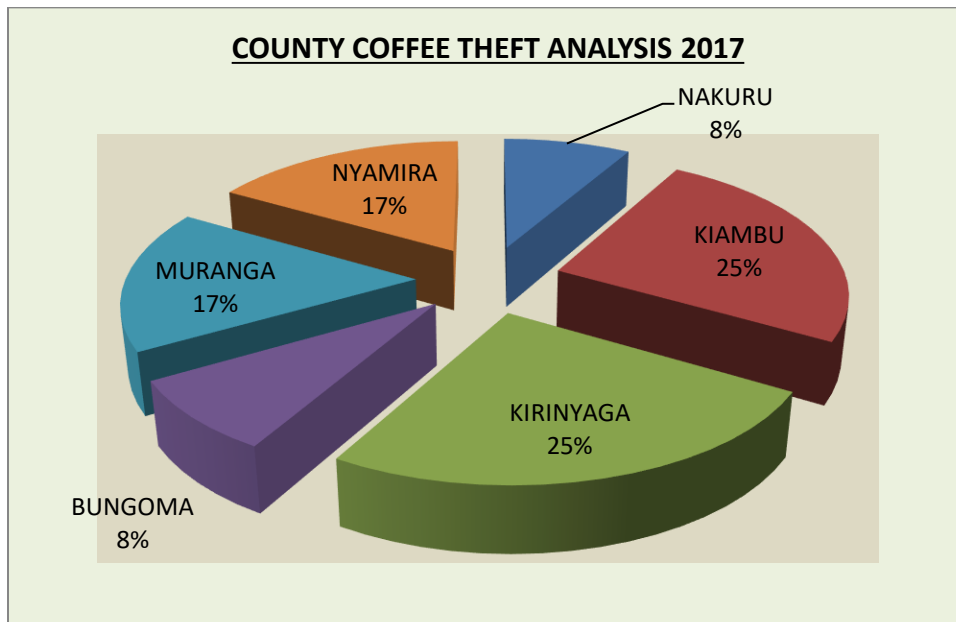
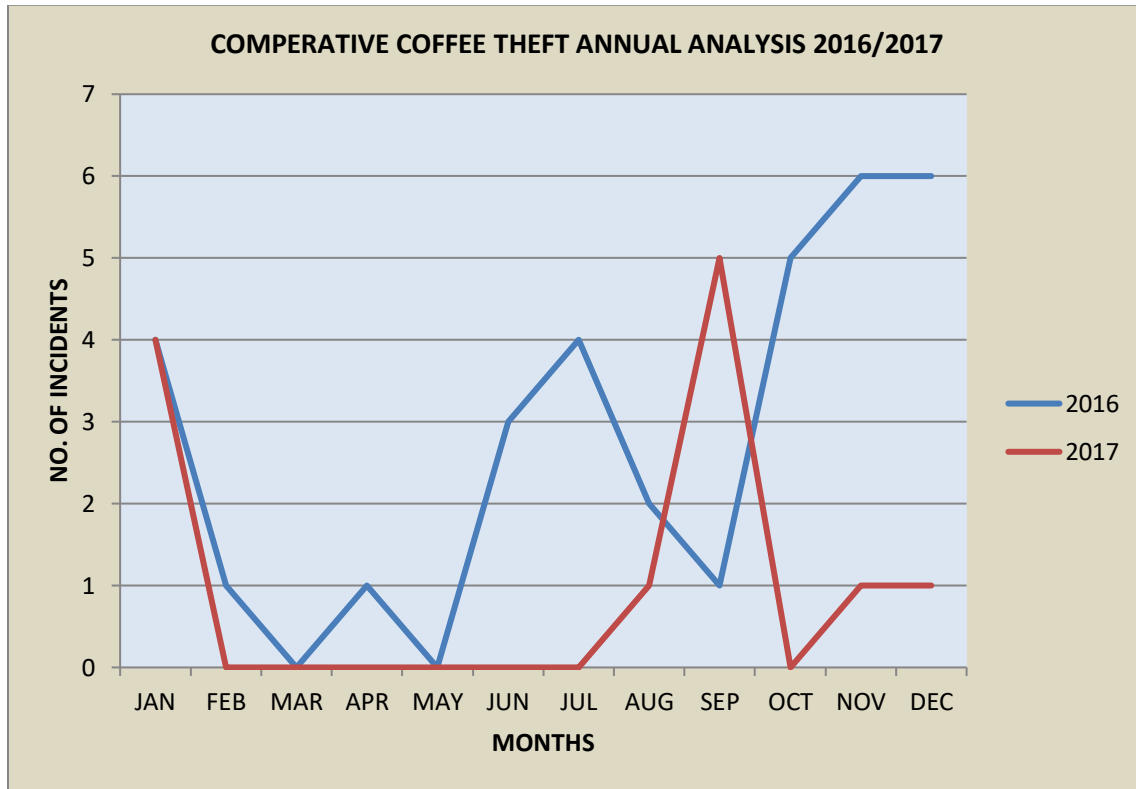
Appendix 5: Pie Chart of Comparative Crime Figures for January to December 2017



Appendix 6: Bar Graph of Comparative Crime Figures for the years 2015/2016/2017



Appendix 7: Coffee theft Cases for the Year 2016/ 2017



Appendix 8: Drug and Psychotropic Substance Arrests for the Year 2017

| SEIZURE NARCOTICS DRUG AND ARREST SUMMARY FOR JAN-DECEMBER 2017. | | | | | | | | |
|---|-----------------------|-------------------------|-------------------------------|-----------------------|-------------------------|---------------|---------------------------|--|
| TYPE OF DRUG | CASES DETECTED | PERSONS ARRESTED | OFFENCES | MALES ARRESTED | FEMALES ARRESTED | KENYAN | NO.OF NON-NATIONAL | QUANTITY OF DRUG SEIZED IN KGS/PKTS |
| COCAINE | 10 | 0 | TRAFFICKING OF NARCOTIC DRUGS | 0 | 0 | 0 | NIL | 1.01KG |
| HEROIN | 11 | 16 | TRAFFICKING OF NARCOTIC DRUGS | 16 | 0 | 6 | NIGERIAN-7 | 17.3591KGS and 48 PKTS |
| | | | | | | | MADAGASCAR-1 | |
| | | | | | | | SOUTH AFRICA-2 | |
| CANNABIS SATIVA | 412 | 390 | TRAFFICKING OF NARCOTIC DRUGS | 287 | 103 | 390 | 0 | 25,111 ROLLS |
| | 3947 | 3917 | POSSESSION | 3447 | 470 | 3917 | 0 | 1,402.5KGS |
| | | | | | | | | STONES-6,584 |
| | | | | | | | | SACKS-38.5 |
| | | | | | | | | BROOMS-12 |
| | | | | | | | | SACK-5 |
| | 127 | 76 | CULTIVATION | 64 | 12 | 76 | 0 | I/4 ACRE |
| TOTAL | 4510 | 4399 | | 3814 | 585 | 4389 | 10 | |

Appendix 9: Table of Comparative No. of Accidents reported

| 2017 ANNUAL ACCIDENT VICTIMS | | | | |
|-------------------------------------|---------------------------|----------------|---------------|--------------|
| | CLASSES OF VICTIMS | | | |
| VICTIMS | FATAL | SERIOUS | SLIGHT | TOTAL |
| PASSENGERS | 677 | 1477 | 2917 | 5071 |
| PEDESTRIANS | 865 | 605 | 296 | 1766 |
| M/CYCLE | 599 | 839 | 921 | 2359 |
| DRIVERS | 292 | 373 | 289 | 954 |
| P/PASS | 171 | 345 | 132 | 648 |
| P/CYCLE | 136 | 136 | 124 | 396 |
| TOTAL | 2740 | 3775 | 4679 | 11194 |

| COMPARATIVE NO. OF ACCIDENTS REPORTED | | | | |
|--|--|--|-------------|-----------------|
| | JAN-DECEMBER 2016 (ANNUAL 2016) | JAN- DECEMBER 2017 (ANNUAL 2017 | DIFF | % DIFF |
| FATAL | 2448 | 2358 | -90 | -3.67647 |
| SERIOUS | 2095 | 1623 | -472 | -22.5298 |
| SLIGHT | 748 | 475 | -273 | -36.4973 |
| TOTAL | 5291 | 4456 | -835 | -15.7815 |

Appendix 10: Offences per County for Jan-Dec 2017

| REGION (COUNTIES) | HOMICIDE | OFFENCES AGAINST MORALITY | OTHER OFFENCES AGAINST PERSONS | ROBBERY | BREAKINGS | THEFT OF STOCK | STEALING | THEFT BY SERVANT | VEHICLE AND OTHER THEFTS | DANGEROUS DRUGS | TRAFFIC OFFENCES | CRIMINAL DAMAGE | ECONOMIC CRIMES | CORRUPTION | OFFENCES INVOLVING POLICE OFFICERS | OFFENCES INVOLVING OTHER PERSONS | OTHER PENAL CODE OFFENCES | GRAND TOTAL |
|----------------------|----------|------------------------------|-----------------------------------|---------|-----------|----------------|----------|------------------|-----------------------------|-----------------|------------------|-----------------|-----------------|------------|---------------------------------------|-------------------------------------|------------------------------|--------------------|
| NAIROBI | 247 | 370 | 1512 | 349 | 385 | 4 | 1304 | 520 | 273 | 537 | 5 | 266 | 935 | 7 | 5 | 0 | 715 | 7434 |
| KIAMBU | 159 | 288 | 1296 | 299 | 389 | 30 | 943 | 269 | 87 | 848 | 3 | 267 | 329 | 2 | 0 | 2 | 392 | 5603 |
| MERU | 133 | 199 | 1723 | 111 | 285 | 143 | 1126 | 131 | 38 | 182 | 0 | 401 | 178 | 1 | 4 | 0 | 496 | 5151 |
| NAKURU | 149 | 321 | 990 | 172 | 371 | 99 | 766 | 197 | 97 | 268 | 5 | 205 | 300 | 9 | 13 | 3 | 348 | 4313 |
| MOMBASA | 49 | 183 | 492 | 144 | 208 | 11 | 666 | 109 | 136 | 250 | 3 | 72 | 192 | 9 | 16 | 1 | 306 | 2847 |
| MACHAKOS | 72 | 169 | 710 | 73 | 204 | 69 | 377 | 108 | 38 | 359 | 1 | 166 | 96 | 2 | 10 | 0 | 179 | 2633 |
| MURANGA | 70 | 137 | 622 | 86 | 163 | 38 | 282 | 51 | 18 | 452 | 0 | 145 | 50 | 0 | 3 | 0 | 285 | 2402 |
| BUNGOMA | 56 | 228 | 816 | 75 | 237 | 82 | 281 | 39 | 46 | 55 | 0 | 110 | 95 | 5 | 0 | 0 | 144 | 2269 |
| KISII | 103 | 191 | 915 | 58 | 162 | 39 | 225 | 32 | 17 | 145 | 11 | 132 | 48 | 3 | 0 | 0 | 137 | 2218 |
| UASIN GISHU | 40 | 189 | 570 | 60 | 181 | 46 | 366 | 98 | 33 | 49 | 1 | 140 | 133 | 1 | 1 | 0 | 164 | 2072 |
| KITUI | 73 | 149 | 546 | 27 | 179 | 119 | 290 | 44 | 10 | 219 | 0 | 110 | 52 | 4 | 1 | 0 | 123 | 1946 |
| KISUMU | 64 | 140 | 498 | 71 | 202 | 55 | 249 | 77 | 36 | 101 | 0 | 104 | 77 | 2 | 2 | 0 | 180 | 1858 |
| KILIFI | 145 | 166 | 384 | 27 | 105 | 35 | 248 | 40 | 30 | 97 | 0 | 78 | 88 | 1 | 0 | 0 | 248 | 1692 |
| TRANS NZOIA | 45 | 149 | 596 | 18 | 171 | 52 | 233 | 50 | 44 | 39 | 0 | 70 | 91 | 0 | 2 | 0 | 114 | 1674 |
| NYERI | 79 | 99 | 360 | 101 | 178 | 41 | 280 | 57 | 20 | 153 | 1 | 87 | 59 | 3 | 1 | 3 | 135 | 1657 |

| | | | | | | | | | | | | | | | | | | |
|---------------|----|-----|-----|----|-----|-----|-----|----|----|-----|----|-----|----|---|---|---|-----|-------------|
| KAJIADO | 35 | 104 | 461 | 63 | 128 | 43 | 241 | 81 | 51 | 145 | 1 | 49 | 90 | 1 | 3 | 0 | 154 | 1650 |
| BUSIA | 44 | 140 | 497 | 50 | 169 | 33 | 263 | 47 | 38 | 53 | 2 | 78 | 72 | 0 | 0 | 2 | 151 | 1639 |
| EMBU | 51 | 83 | 548 | 31 | 136 | 21 | 206 | 77 | 19 | 162 | 0 | 116 | 49 | 0 | 2 | 1 | 131 | 1633 |
| KIRINYAGA | 42 | 99 | 503 | 26 | 128 | 29 | 213 | 55 | 18 | 186 | 0 | 110 | 70 | 2 | 1 | 0 | 131 | 1613 |
| MAKUENI | 70 | 130 | 473 | 37 | 148 | 61 | 240 | 40 | 25 | 90 | 0 | 105 | 34 | 1 | 1 | 0 | 138 | 1593 |
| KAKAMEGA | 42 | 115 | 485 | 53 | 163 | 44 | 209 | 63 | 24 | 78 | 1 | 89 | 71 | 1 | 1 | 0 | 145 | 1584 |
| KERICHO | 61 | 98 | 624 | 43 | 121 | 57 | 153 | 38 | 31 | 55 | 2 | 125 | 52 | 0 | 0 | 0 | 64 | 1524 |
| NYANDARUA | 69 | 127 | 328 | 38 | 178 | 73 | 197 | 52 | 15 | 99 | 1 | 81 | 41 | 1 | 2 | 0 | 100 | 1402 |
| HOMA BAY | 59 | 109 | 457 | 47 | 125 | 51 | 166 | 29 | 16 | 64 | 4 | 78 | 42 | 0 | 0 | 0 | 85 | 1332 |
| SIAYA | 86 | 125 | 448 | 23 | 146 | 38 | 134 | 16 | 21 | 54 | 0 | 102 | 23 | 0 | 0 | 0 | 105 | 1321 |
| MIGORI | 74 | 78 | 400 | 64 | 107 | 39 | 153 | 14 | 23 | 54 | 0 | 63 | 40 | 3 | 0 | 0 | 169 | 1281 |
| LAIKIPIA | 37 | 76 | 300 | 37 | 104 | 114 | 219 | 41 | 12 | 53 | 10 | 81 | 53 | 0 | 1 | 0 | 82 | 1220 |
| NANDI | 30 | 94 | 424 | 29 | 110 | 30 | 132 | 12 | 9 | 47 | 0 | 61 | 26 | 6 | 0 | 0 | 138 | 1148 |
| NAROK | 44 | 91 | 364 | 35 | 89 | 86 | 132 | 36 | 19 | 39 | 0 | 65 | 26 | 0 | 3 | 0 | 81 | 1110 |
| TURKANA | 44 | 100 | 339 | 49 | 80 | 120 | 93 | 7 | 19 | 28 | 5 | 29 | 19 | 0 | 1 | 0 | 159 | 1092 |
| NYAMIRA | 81 | 128 | 372 | 60 | 97 | 37 | 101 | 11 | 6 | 37 | 0 | 56 | 13 | 0 | 0 | 0 | 92 | 1091 |
| KWALE | 42 | 137 | 214 | 65 | 53 | 43 | 129 | 22 | 15 | 32 | 0 | 30 | 19 | 0 | 8 | 0 | 42 | 851 |
| BOMET | 34 | 64 | 364 | 15 | 68 | 28 | 73 | 11 | 19 | 29 | 0 | 91 | 19 | 1 | 0 | 0 | 34 | 850 |
| THARAKA NITHI | 34 | 38 | 294 | 19 | 65 | 34 | 98 | 19 | 10 | 45 | 0 | 66 | 19 | 0 | 0 | 0 | 105 | 846 |
| BARINGO | 56 | 55 | 314 | 11 | 69 | 59 | 68 | 22 | 9 | 14 | 1 | 48 | 21 | 0 | 0 | 0 | 74 | 821 |
| VIHIGA | 27 | 82 | 288 | 32 | 84 | 8 | 89 | 3 | 5 | 58 | 0 | 46 | 13 | 0 | 0 | 0 | 29 | 764 |
| MARSABIT | 35 | 43 | 333 | 26 | 26 | 20 | 69 | 14 | 9 | 38 | 0 | 45 | 9 | 0 | 0 | 0 | 69 | 736 |
| TAITA TAVETA | 24 | 58 | 178 | 23 | 72 | 33 | 86 | 24 | 10 | 46 | 1 | 39 | 17 | 2 | 0 | 1 | 65 | 679 |

| | | | | | | | | | | | | | | | | | | |
|--------------|-------------|-------------|--------------|-------------|-------------|-------------|--------------|-------------|-------------|-------------|-----------|-------------|-------------|-----------|-----------|-----------|-------------|--------------|
| WEST POKOT | 26 | 46 | 242 | 15 | 33 | 32 | 86 | 10 | 12 | 13 | 1 | 44 | 17 | 0 | 0 | 0 | 93 | 670 |
| ELGEYO | | | | | | | | | | | | | | | | | | |
| MARAKWET | 50 | 58 | 219 | 37 | 40 | 17 | 58 | 12 | 6 | 8 | 1 | 78 | 12 | 0 | 0 | 0 | 37 | 633 |
| GARISSA | 9 | 25 | 190 | 16 | 23 | 10 | 51 | 6 | 6 | 33 | 0 | 19 | 16 | 0 | 0 | 0 | 48 | 452 |
| MANDERA | 8 | 30 | 161 | 21 | 11 | 2 | 42 | 2 | 0 | 94 | 0 | 17 | 12 | 0 | 0 | 0 | 46 | 446 |
| SAMBURU | 25 | 34 | 136 | 37 | 21 | 36 | 66 | 7 | 3 | 7 | 6 | 20 | 8 | 1 | 0 | 0 | 25 | 432 |
| WAJIR | 6 | 30 | 187 | 5 | 33 | 16 | 53 | 8 | 3 | 16 | 0 | 27 | 14 | 0 | 0 | 0 | 27 | 425 |
| TANA RIVER | 8 | 64 | 130 | 10 | 33 | 20 | 53 | 5 | 4 | 20 | 1 | 8 | 5 | 0 | 0 | 1 | 40 | 402 |
| LAMU | 10 | 35 | 76 | 9 | 30 | 11 | 54 | 4 | 4 | 70 | 2 | 12 | 5 | 0 | 0 | 0 | 63 | 385 |
| ISIOLO | 24 | 16 | 114 | 14 | 17 | 28 | 32 | 8 | 11 | 16 | 0 | 25 | 8 | 1 | 4 | 1 | 49 | 368 |
| KAPU | 3 | 0 | 11 | 1 | 1 | 0 | 40 | 5 | 6 | 18 | 0 | 4 | 14 | 0 | 0 | 0 | 26 | 129 |
| RAILWAYS | 0 | 2 | 11 | 1 | 3 | 0 | 21 | 9 | 3 | 10 | 0 | 2 | 23 | 6 | 1 | 0 | 9 | 101 |
| TOTAL | 2774 | 5492 | 22515 | 2713 | 6131 | 2136 | 11656 | 2632 | 1404 | 5565 | 69 | 4262 | 3695 | 75 | 86 | 15 | 6772 | 77992 |

Appendix 11: Comparative Crime Figures for the years 2015/2016/2017

| OFFENCES | | 2015 | 2016 | DIF. | % DIFF | 2016 | 2017 | DIF. | % DIFF |
|--------------------------------|-------------------------------|-------|-------|------|--------|-------|-------|------|--------|
| HOMICIDE | a) Murder | 1777 | 1879 | 102 | 6 | 1879 | 1954 | 75 | 4 |
| | b) Manslaughter | 62 | 53 | -9 | -15 | 53 | 65 | 12 | 23 |
| | c) Infanticide | 51 | 42 | -9 | -18 | 42 | 33 | -9 | -21 |
| | d) Procuring Abortion | 51 | 33 | -18 | -35 | 33 | 27 | -6 | -18 |
| | e) Concealing Birth | 86 | 87 | 1 | 1 | 87 | 55 | -32 | -37 |
| | f) Suicide | 320 | 356 | 36 | 11 | 356 | 387 | 31 | 9 |
| | g) Causing Death by D/Driving | 301 | 301 | 0 | 0 | 301 | 253 | -48 | -16 |
| | Sub - Total | 2648 | 2751 | 103 | 4 | 2751 | 2774 | 23 | 1 |
| OFFENCES AGAINST MORALITY | a) Rape | 851 | 889 | 38 | 4 | 889 | 817 | -72 | -8 |
| | b) Defilement | 4495 | 4601 | 106 | 2 | 4601 | 4056 | -545 | -12 |
| | c) Incest | 336 | 341 | 5 | 1 | 341 | 213 | -128 | -38 |
| | d)Un-natural offences | 124 | 98 | -26 | -21 | 98 | 96 | -2 | -2 |
| | e) Bestiality | 43 | 38 | -5 | -12 | 38 | 18 | -20 | -53 |
| | f) Indecent assault | 187 | 176 | -11 | -6 | 176 | 213 | 37 | 21 |
| | g) Abduction | 110 | 64 | -46 | -42 | 64 | 60 | -4 | -6 |
| | h) Bigamy | 18 | 21 | 3 | 17 | 21 | 19 | -2 | -10 |
| | Sub - Total | 6164 | 6228 | 64 | 1 | 6228 | 5492 | -736 | -12 |
| OTHER OFFENCES AGAINST PERSONS | a) Assault | 14921 | 15705 | 784 | 5 | 15705 | 15968 | 263 | 2 |
| | b) Creating Disturbance | 5875 | 6150 | 275 | 5 | 6150 | 6117 | -33 | -1 |
| | c) Affray | 378 | 440 | 62 | 16 | 440 | 430 | -10 | -2 |
| | Sub - Total | 21174 | 22295 | 1121 | 5 | 22295 | 22515 | 220 | 1 |
| ROBBERY | a) Robbery | 712 | 653 | -59 | -8 | 653 | 638 | -15 | -2 |
| | b) Robbery with Violence | 2066 | 1983 | -83 | -4 | 1983 | 1990 | 7 | 0 |

| | | | | | | | | | |
|--------------------------|---------------------------------|------|-------|------|-----|-------|-------|------|-----|
| | c) Carjacking | 28 | 18 | -10 | -36 | 18 | 16 | -2 | -11 |
| | d) Robbed of M/v | 22 | 11 | -11 | -50 | 11 | 22 | 11 | 100 |
| | e) Cattle Rustling | 37 | 32 | -5 | -14 | 32 | 47 | 15 | 47 |
| | Sub - Total | 2865 | 2697 | -168 | -6 | 2697 | 2713 | 16 | 1 |
| BREAKINGS | a) House Breaking | 2266 | 2439 | 173 | 8 | 2439 | 2611 | 172 | 7 |
| | b) Burglary | 1407 | 1452 | 45 | 3 | 1452 | 1497 | 45 | 3 |
| | c) Other Breaking | 1918 | 1730 | -188 | -10 | 1730 | 2023 | 293 | 17 |
| | Sub - Total | 5591 | 5621 | 30 | 1 | 5621 | 6131 | 510 | 9 |
| THEFT OF STOCK | Theft of stock | 1961 | 1918 | -43 | -2 | 1918 | 2136 | 218 | 11 |
| | Sub - Total | 1961 | 1918 | -43 | -2 | 1918 | 2136 | 218 | 11 |
| STEALING | a) Handling Stolen Property | 413 | 357 | -56 | -14 | 357 | 428 | 71 | 20 |
| | b) Stealing from Person | 622 | 644 | 22 | 4 | 644 | 732 | 88 | 14 |
| | c) Stealing by Tenants/lodgers | 68 | 60 | -8 | -12 | 60 | 91 | 31 | 52 |
| | d) Stealing from a building | 224 | 182 | -42 | -19 | 182 | 235 | 53 | 29 |
| | e) General Stealing | 8201 | 9118 | 917 | 11 | 9118 | 10170 | 1052 | 12 |
| | Sub - Total | 9528 | 10361 | 833 | 9 | 10361 | 11656 | 1295 | 12 |
| THEFT BY SERVANT | a) Stealing by Directors | 165 | 64 | -101 | -61 | 64 | 29 | -35 | -55 |
| | b) Stealing by Agents | 177 | 187 | 10 | 6 | 187 | 174 | -13 | -7 |
| | c) Stealing by employee/servant | 1842 | 2189 | 347 | 19 | 2189 | 2429 | 240 | 11 |
| | Sub - Total | 2184 | 2440 | 256 | 12 | 2440 | 2632 | 192 | 8 |
| VEHICLE AND OTHER THEFTS | a) Theft of M/v | 436 | 425 | -11 | -3 | 425 | 486 | 61 | 14 |
| | b) Theft from M/v | 122 | 172 | 50 | 41 | 172 | 159 | -13 | -8 |
| | c) Theft of M/v parts | 123 | 187 | 64 | 52 | 187 | 177 | -10 | -5 |
| | d) Theft of Motor cycle | 430 | 571 | 141 | 33 | 571 | 582 | 11 | 2 |
| | Sub - Total | 1111 | 1355 | 244 | 22 | 1355 | 1404 | 49 | 4 |

| | | | | | | | | | |
|------------------|--|------|------|-----|-----|------|------|------|-----|
| DANGEROUS DRUGS | a) Possession | 4869 | 5464 | 595 | 12 | 5464 | 4844 | -620 | -11 |
| | b) Handling | 83 | 59 | -24 | -29 | 59 | 36 | -23 | -39 |
| | c) Trafficking | 407 | 509 | 102 | 25 | 509 | 511 | 2 | 0 |
| | d) Cultivating | 102 | 85 | -17 | -17 | 85 | 96 | 11 | 13 |
| | e) Usage | 64 | 43 | -21 | -33 | 43 | 78 | 35 | 81 |
| | Sub - Total | 5525 | 6160 | 635 | 11 | 6160 | 5565 | -595 | -10 |
| TRAFFIC OFFENCES | a) Taking Vehicle w/o Lawful authority | 86 | 80 | -6 | -7 | 80 | 41 | -39 | -49 |
| | b) Driving under influence of Alcohol | 34 | 59 | 25 | 74 | 59 | 28 | -31 | -53 |
| | Sub - Total | 120 | 139 | 19 | 16 | 139 | 69 | -70 | -50 |
| CRIMINAL DAMAGE | a) Malicious Damage | 3089 | 3302 | 213 | 7 | 3302 | 3427 | 125 | 4 |
| | b) Arson | 643 | 773 | 130 | 20 | 773 | 601 | -172 | -22 |
| | c) Negligent Acts | 73 | 73 | 0 | 0 | 73 | 86 | 13 | 18 |
| | d) Other criminal damage | 178 | 159 | -19 | -11 | 159 | 148 | -11 | -7 |
| | Sub - Total | 3983 | 4307 | 324 | 8 | 4307 | 4262 | -45 | -1 |
| ECONOMIC CRIMES | a) Obtaining by False Pretence | 2587 | 2769 | 182 | 7 | 2769 | 3093 | 324 | 12 |
| | b) Currency Forgery | 163 | 150 | -13 | -8 | 150 | 111 | -39 | -26 |
| | c) False Accounting | 50 | 38 | -12 | -24 | 38 | 28 | -10 | -26 |
| | d) Other Fraud/Forgery Offences | 444 | 546 | 102 | 23 | 546 | 463 | -83 | -15 |
| | Sub - Total | 3244 | 3503 | 259 | 8 | 3503 | 3695 | 192 | 5 |
| CORRUPTION | a) Soliciting for Bribe | 33 | 52 | 19 | 58 | 52 | 26 | -26 | -50 |
| | b) Accepting Bribe | 9 | 10 | 1 | 11 | 10 | 8 | -2 | -20 |
| | c) Accepting Free Gifts | 0 | 1 | 1 | 0 | 1 | 0 | -1 | 0 |
| | d) Demanding by false pretence | 9 | 10 | 1 | 11 | 10 | 6 | -4 | -40 |
| | e) Other Corruption Offences | 28 | 19 | -9 | -32 | 19 | 35 | 16 | 84 |
| | Sub - Total | 79 | 92 | 13 | 16 | 92 | 75 | -17 | -18 |

| | | | | | | | | | |
|------------------------------------|--------------------------------------|--------------|--------------|-------------|----------|--------------|--------------|-------------|----------|
| OFFENCES INVOLVING POLICE OFFICERS | a) Soliciting for Bribe | 18 | 7 | -11 | -61 | 7 | 8 | 1 | 14 |
| | b) Accepting Bribe | 4 | 0 | -4 | -100 | 0 | 3 | 3 | 0 |
| | c) Accepting Free Gifts | 1 | 0 | -1 | -100 | 0 | 0 | 0 | 0 |
| | d) Demanding by false pretence | 3 | 1 | -2 | -67 | 1 | 9 | 8 | 800 |
| | e) Other Criminal Offences | 45 | 49 | 4 | 9 | 49 | 66 | 17 | 35 |
| | Sub - Total | 71 | 57 | -14 | -20 | 57 | 86 | 29 | 51 |
| OFFENCES INVOLVING TOURIST | a) Bag Snatching | 2 | 0 | -2 | 0 | 0 | 3 | 3 | 0 |
| | b) Other offences Against tourists | 7 | 6 | -1 | -14 | 6 | 7 | 1 | 17 |
| | c) Other Offences Involving Tourists | 10 | 9 | -1 | -10 | 9 | 5 | -4 | -44 |
| | Sub - Total | 19 | 15 | -4 | -21 | 15 | 15 | 0 | 0 |
| OTHER PENAL CODE OFFENCES | Other penal code offences | 6223 | 7047 | 824 | 13 | 7047 | 6772 | -275 | -4 |
| | Sub - Total | 6223 | 7047 | 824 | 13 | 7047 | 6772 | -275 | -4 |
| GRAND TOTAL | | 72490 | 76986 | 4496 | 6 | 76986 | 77992 | 1006 | 1 |